

National Benchmarking

Meaningful National Account Analytics for Key Stakeholders

As more employers take an “activist” role in curbing rising healthcare costs, the industry needs access to sophisticated, data-driven insights around members’ healthcare benefits utilization. Blue Health Intelligence® (BHI®) developed a National Benchmarking Module to allow users to conduct robust, apples-to-apples comparisons of accounts’ performance at national, regional, and industry levels.

Multistate Accounts Need Benchmarks Without Boundaries

Powered by the BHI National Data Repository (BDR) – the nation’s most robust database of current, conformed, and continuous healthcare claims – our National Benchmarking Module enables rich industry and geographic comparisons. Access to this national data allows users to view more realistic and appropriate norms for employees and beneficiaries across the United States. Users can also better reflect variances and trends in cost and quality measures, where outcomes vary by different geographies. By applying a combination of national, regional, MSA, and Standard Industry Classification-level lenses, users can:



Compare Employer Accounts

- Eliminate data gaps to accurately compare key metrics against account, plan, and national statistics
- Spot outliers, track variances, and optimize benefit structures across settings and service areas
- Make risk-adjusted comparisons across a wide variety of dimensions



Drill Into Cost and Utilization Data

- Examine risk-adjusted benchmark differences using data that is refreshed quarterly
- Dig into multiple variables, including inpatient, outpatient, professional settings, and specific procedures
- Find root causes for differences in utilization and other key healthcare cost and quality drivers

The Power of BHI Data



293M+

Unique Members and Growing
Refreshed Monthly



29.5B+

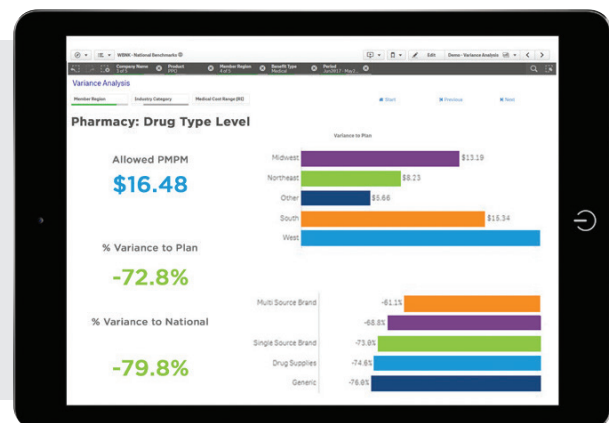
Claims and Climbing
Covering Every 3-Digit Zip Code in the U.S.



12+

Years of Longitudinal Data
Conformed Uniformly

Understand cost and utilization drivers with **national, regional, and industry-level** comparisons.



Comprehensive Benchmarks Foster Consultative Relationships

BHI's state-of-the-art analytics, data granularity, and objectivity give stakeholders the strategic intelligence to make meaningful, credible recommendations to their clients. Our massive datasets allow users to narrow their focus – to specific procedures, if needed – and identify cost drivers at the geographic level, by industry segment, or by type of service site.

Using our national benchmarking solution, stakeholders can:



Explore Comparable Population Factors Given Differences In:

- Demographics
- Geographies
- Industries
- Health insurance products (e.g., PPO, HMO)
- Account size



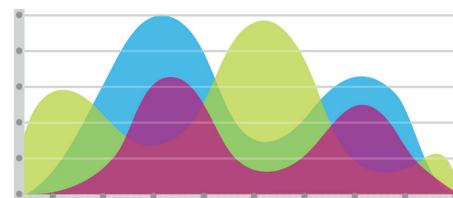
Probe Differences In Adjusted Benchmarks Based On:

- Total cost of care
- Unit costs
- High-cost claimant status
- Average length of stay
- Prescription drug usage



Solve Issues Before They Escalate

- Clinical episode components
- Health risk scores
- Industry standard quality measures



“

BHI's national benchmarking solution gives us the confidence and accuracy we need to 'peel the onion' and deliver impactful insights and recommendations to accounts with a multistate footprint. The enterprise level visibility and resulting insights have strengthened our relationships with large clients.”

Client Analytics Director
Regional Health Plan

Are you using national benchmarks to inform your customers' decision-making?



Contact BHI to learn how you can leverage national benchmarks to deliver impactful insights. Visit bluehealthintelligence.com or email info@bluehealthintelligence.com.